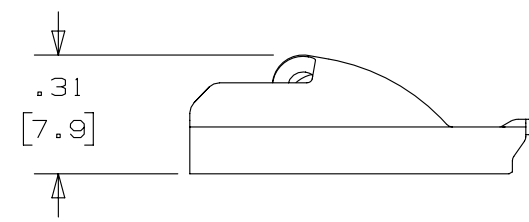
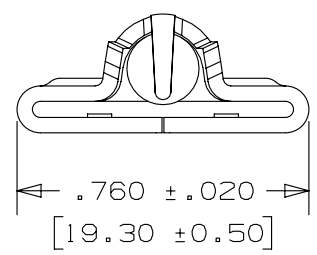
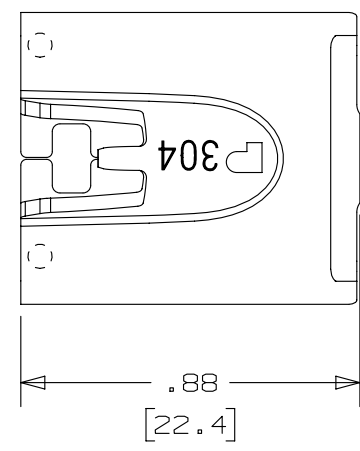



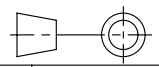
THIS COPY IS PROVIDED ON A RESTRICTED BASIS AND IS NOT TO BE USED IN ANY WAY DETRIMENTAL TO THE INTERESTS OF PANDUIT CORP.

NOTES:

1. TO BE USED WITH PANDUIT METAL BANDING MBSH-TR
2. INSTALLATION TOOL: RT2HT, PBTMT, RT2HTN
3. BRACKETS [] DENOTES DIMENSIONS IN MILLIMETERS
4. MINIMUM LOOP TENSILE STRENGTH: 450 lbs (2002 newtons)
5. TOLERANCES:
 - .X = ±.030 [.762]
 - .XX = ±.020 [.508]
 - .XXX = ±.010 [.254]
 - ANGLES = ±2°
6. MATERIAL: 304 STAINLESS STEEL



REV	DATE	BY	CHK	APR	DESCRIPTION	ECN
03A	11/13	MIM	MIM	RGB	1. PART NUMBER MTHSH-C WAS INCORRECTLY SPECIFIED MTHS-CH	SSECN01115
02A	4/13	JAMB	MIM	RGRO	UPDATE DRAWING TO NEW GLOBAL PANDUIT TITLE BLOCK WITH PANDUIT LOGO	SSECN01049
01A	7/11	JAMB	MIM	---	ADDED INSTALLATION TOOLS PBTMT & RT2HTN	-----
00A	10/08	JAMB	SKB	---	ORIG CAD FILE SPEC WAS S41204_00. NOTE #2 - APPLICATION TOOL RT1HT REPLACED BY RT2HT	-----
00	8/05	JAMB	EJD	---	DRAWING RELEASED	SS00016

TITLE METAL LOCKING TIE HEAD-SUPER HEAVY DUTY FOR UNCOATED BANDING PART NO. MTHSH-C CUSTOMER DRAWING					
ITEM REVISION NAME N41204BS/03					
DATASET FILE NAME N41204BS_DC/03A					
UNLESS OTHERWISE SPECIFIED, DIMENSIONAL TOLERANCES ARE: IN [mm] .x ± .1 [2.54] .xxx ± .005 [.127] .xx ± .01 [.25] ANGLES ± 5 °					MATERIAL: SEE NOTES
 THIRD ANGLE PROJECTION					DRAWING NUMBER: N41204BS_DC
DRAWN BY JAMB	DATE 8/9/05	CHK EJD	SCALE 2:1	SHT 1 OF 1	SIZE A